

Advanced Manufacturing in New York's Lower Hudson Valley

A Vital Sector with Significant Workforce Opportunities

In Putnam and Westchester Counties...

\$16-\$45/hr

Typical Starting Wage Range
for Manufacturing Workers of
All Education Levels in NY's
Hudson Valley (NYS DOL 2019)

14,000

Estimated Total Manufacturing
Employees
(EMSI, 2018)

25.5%

Portion of Manufacturing
Employees Age 55 and Older
(EMSI, 2018)

Why Manufacturing Matters

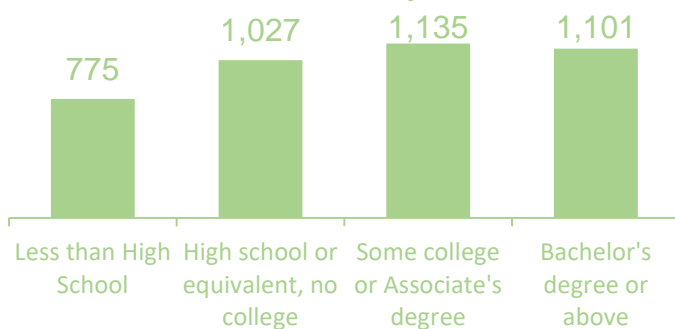
Innovative Products and Quality Jobs

Putnam and Westchester Counties are home to an estimated 680 manufacturing firms. The region's manufacturing workforce serves the aerospace, biotech, electronics, and chemical / pharmaceutical sectors along with dozens of other specialties.

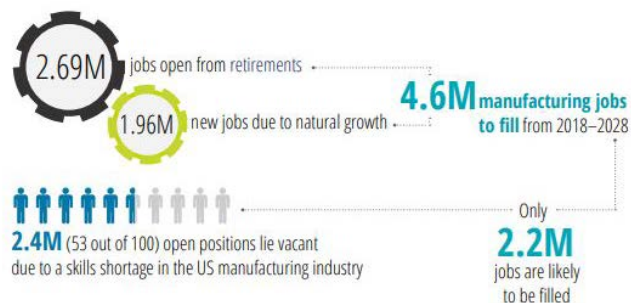
- Manufacturing career pathways provide good job opportunities for workers at all levels of education
- Many manufacturers operating today have incorporated technology while upskilling their workforce to stay innovative and competitive.
- Putnam and Westchester manufacturers generate over \$50 billion in annual earnings. (EMSI, 2018)

Provided by:

Annual New MFG Hires by Education Level



National Skills Gap Poses Major Challenge



*Calculated on the basis of 52.7% of the skilled manufacturing positions that are unfilled (per the 2018 survey)
**Retirement age of 66

Source: BLS Data, OEM (Oxford Economics Model), Deloitte and Manufacturing Institute skills research initiative.

Advanced Manufacturing in New York's Lower Hudson Valley

Promising Opportunities for Creative Problem Solvers

Manufacturers needs innovative, hard-working employees at all levels

Production Worker

Typical Job Profile

- HS Diploma or Equivalent
- Some/Moderate On-the-Job Training plus Industry Certification
- Median Hourly Wage: \$15.63
- Skills: assembly, fabrication, machine operation, repair, basic math, troubleshooting

Machinist / Mechanical Technician

Typical Job Profile

- Associate's Degree and/or NIMS/Industry Certification
- Median Hourly Wage Range: \$16.00 to \$37.36
- Skills: machining, lathe operation, CNC operation/programming, CAM, troubleshooting, quality inspection, math, instrumentation

NIMS=National Institute for Metalworking Skills

Mechanical Engineer

Typical Job Profile

- 4-year degree
- Some/Moderate On-the-Job Training
- Median Hourly Wage: \$49.31
- Skills: engineering and design, AUTOCAD, project management, data analysis, prototyping, math, physics, communication

Connecting Schools and Area Manufacturers

Resources for Educators

Westchester Community College: School of Mathematics, Science and Engineering (sunnywcc.edu/academics/school-of-mathematics-science-and-engineering) & Workforce Development and Community Education (sunnywcc.edu/continuing-ed/ce/)

Southern Westchester BOCES (swboces.org): Education and career training for a variety of career and technical disciplines to develop skills that will lead to rewarding, high-demand careers

Go Make It (gomakeit.org): Interactive resource for students, parents, and educators to explore manufacturing and technical careers

Council of Industry's YouTube Channel (tinyurl.com/y66cuc7s): Features videos from local companies highlighting a "day-in-the-life" of a manufacturing employee

Manufacturing Intermediary Apprenticeship Program (nysapprenticeship.org): NYSDOL-registered apprenticeship program for manufacturing trades.

Provided by:



George Latimer, County Executive
Dr. DaMia Harris-Madden, Executive Director
Westchester County Youth Bureau

westchestergov.com

